



# GMT MONTHLY MEMBERSHIP PROGRESS REPORT

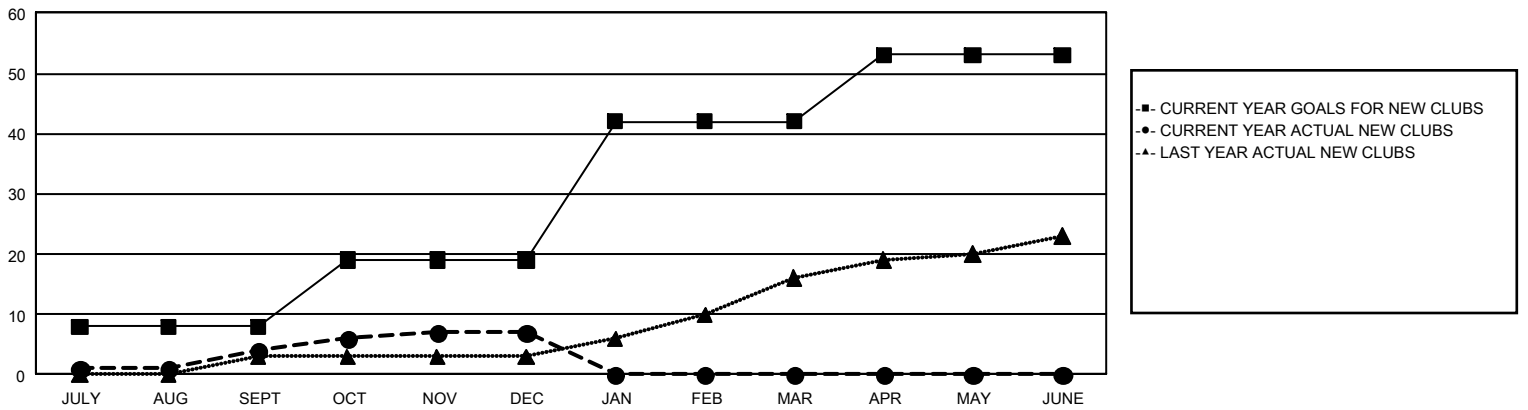
## GAT Constitutional Area 5 - Japan

Results as of: 12/31/2024

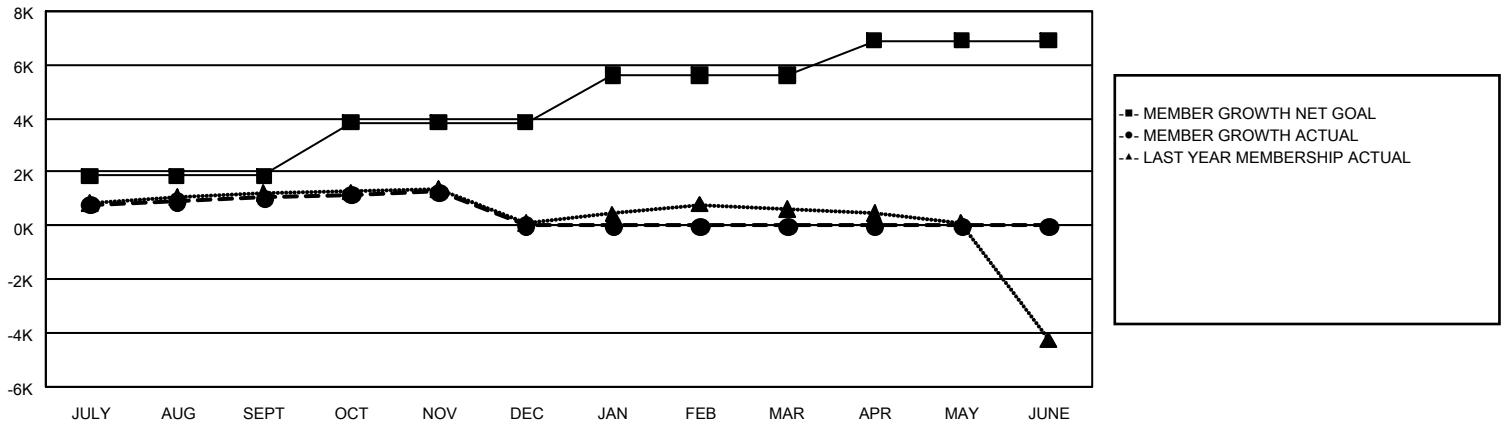
REPORT DOES NOT INCLUDE CLUBS IN UNDISTRICTED AREAS.

Clubs				Members			
RESULTS FOR 2024-2025				RESULTS FOR 2024-2025			
QUARTER	NEW CLUB GOAL	NEW CLUBS	DROPPED CLUBS	QUARTER	MEMBER GROWTH NET GOAL	MEMBER GROWTH ACTUAL	DROPPED MEMBERS ACTUAL (including transfers)
JULY/AUG/SEPT	8	4	3	JULY/AUG/SEPT	1,850	2,829	1,555
OCT/NOV/DEC	11	3	11	OCT/NOV/DEC	1,994	1,433	2,334
JAN/FEB/MAR	23	0	0	JAN/FEB/MAR	1,787	0	0
APR/MAY/JUNE	11	0	0	APR/MAY/JUNE	1,271	0	0

GOALS AND ACTUAL NEW CLUBS CUMULATIVE



GOALS AND ACTUAL MEMBERS CUMULATIVE



DROPPED CLUBS: 14

1,466 CLUBS OF 2,708 ADDED 1 OR MORE NEW MEMBERS

### GENDER DISTRIBUTION

MALE 71,946 (77.55%)  
FEMALE 20,814 (22.44%)

### DROPPED MEMBERS

DECEASED	388
CLUB CANCELLED	50
OTHER	3,322
<b>TOTAL</b>	<b>3,760</b>

[CLICK HERE FOR CUMULATIVE MEMBERSHIP DATA](#)

TOTAL FAMILY UNIT MEMBERS	0
FAMILY MEMBERS PAYING HALF DUES	0